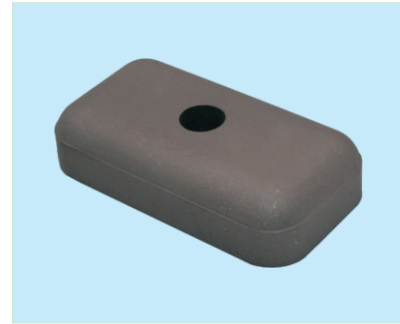
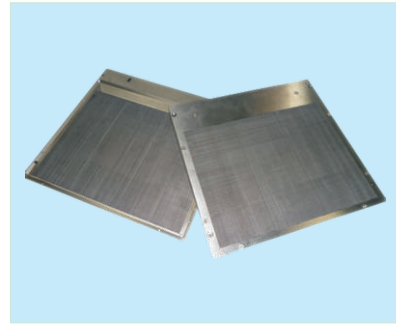


Tungsten heavy alloy

www.zgcarbide.com



Features:

High density, high tensile strength, good wear resistance, good X-ray & γ -ray absorption ability, conductivity, good electrical & thermal conductivity and good machinability.

Application:

gyroscope, container for radioactive source, leaves for MLC, shielding parts for nuclear power instrument shielding parts for P.E.T. instrument, armour-piercing, collimator leaves, shielding for injection syringe weight stack for Golf clubs & fishing rod

Physical and Mechanical properties:

Type	Density(g/cm ³)	tensile Strength (Mpa)	Elongation	Hardness(HRC)
90W-Ni-Fe/Cu	16.9-17.1	700-1000	20-33	24-32
93W-Ni-Fe/Cu	17.5-17.6	700-1000	15-25	26-30
95W-Ni-Fe/Cu	17.9-18.1	700-900	8-15	25-35
97W-Ni-Fe/Cu	18.4-18.5	600-800	8-14	30-35

*We can produce special size products according to customers' design.